

OKM Fusion PROFESSIONAL PLUS

QUICK START GUIDE



ab Version 2.0
version 2.0 or higher



OKM
GERMAN DETECTORS

ZUSAMMENBAU | ASSEMBLY



1
Ladegerät an Kontrolleinheit anstecken, um Ladestand zu prüfen (voll = LED aus) und Akku zu laden (LED an).
Plug Charger into Control Unit to check charge status (fully charged = LED off) and recharge batteries (LED on).



3
Software installieren, Bluetooth einrichten und Notebook mit Sonde verbinden (siehe *DATENÜBERTRAGUNG*).
Install software, setup Bluetooth and connect notebook with Probe (see *DATA TRANSFER*).

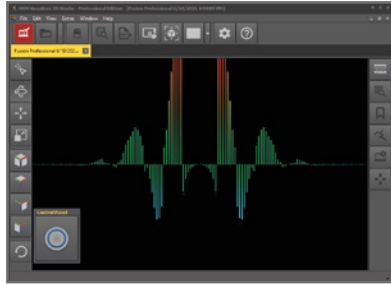


2
Sonde einschalten. Sonde vertikal in der Hand halten
ODER Sonde horizontal an Gestänge anklammern.
Power on Probe. Hold Probe vertically in your hand
OR clamp Probe horizontally to Telescopic Rod.



4
Sonde vertikal: Steuerung via Sonde oder Notebook.
Sonde horizontal: Steuerung nur via Notebook.
Probe vertical: Operation via Probe or notebook.
Probe horizontal: Operation only via notebook.

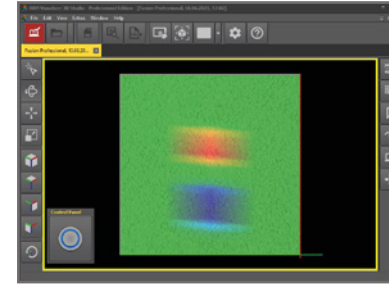
BETRIEBSARTEN | OPERATING MODES



LIVE SOUND

Akustische und visuelle Magnetfeldmessung zur Detektion von oberflächennahen Metallobjekten.

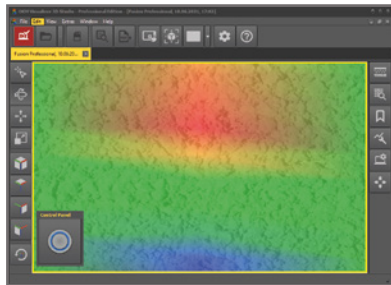
Acoustic and visual magnetic field measurement to detect metal objects near the surface.



3D GROUND SCAN

Flächenmessung mit Visualisierung in 3D zur Analyse am Notebook. Sonde vertikal oder horizontal.

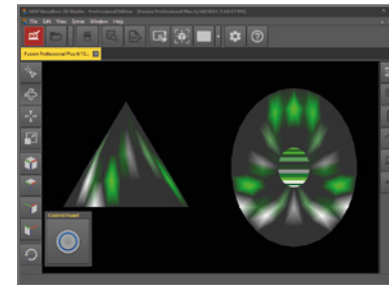
Ground measurement with 3D visualization for detailed analysis on the notebook. Probe vertical or horizontal.



LIVE SCAN (horizontal)

Schnelle Detektion von Objekten in beliebiger Scanrichtung (Messung wird nicht gespeichert). Sonde in horizontaler Ausrichtung.

Fast detection of objects in random scan direction (scan can not be saved). Probe in horizontal orientation.

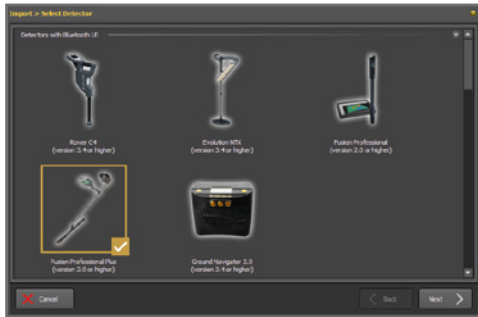


LIVE SCAN (vertical)

Schnelle Detektion von Anomalien in beliebiger Scanrichtung (Messung wird nicht gespeichert). Sonde in vertikaler Ausrichtung.


Fast detection of anomalies in random scan direction (scan can not be saved). Probe in vertical orientation.

ERSTE MESSUNG | FIRST MEASUREMENT

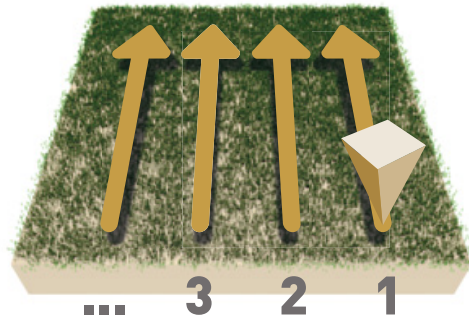


Open *Visualizer 3D Studio*,  import start and configure *3D Ground Scan*:

- Field Length: *20 m*
- Scan Mode: *Parallel*
- Probe Orientation: *Vertical*
- Search Coil: *Ja*

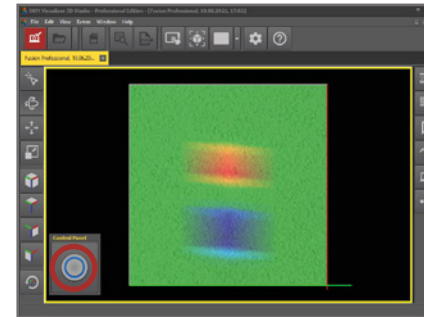
Open *Visualizer 3D Studio*,  start import and configure *3D Ground Scan*:

- Field Length: *20 m*
- Scan Mode: *Parallel*
- Probe Orientation: *Vertical*
- Search Coil: *Yes*



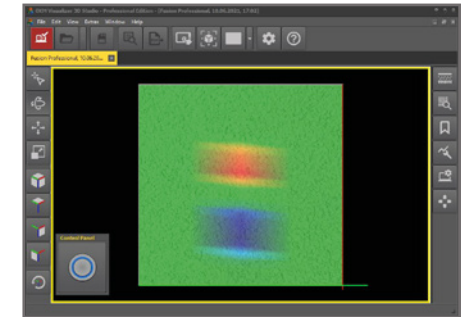
Start at bottom right of the scan field.

- Press the Trigger Button at the probe or in *Visualizer 3D Studio* to start scanning.
- Scan the line. The measurement of the line will end automatically.

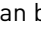



Repeat this procedure to measure further scan lines.

Wiederholen Sie den Vorgang, um weitere Messbahnen zu scannen.



Finish the scan by pressing  and save the scan on the notebook .

Nach der letzten Bahn Messung durch Drücken von  beenden und auf dem Notebook speichern .



Scannen Sie alle Messbahnen in gleicher Geschwindigkeit. Halten Sie die Sonde gerade und vermeiden Sie Rotieren oder Pendeln.

Walk all scan lines at the same speed. Keep the probe straight and avoid pivoting or swinging.

DATENÜBERTRAGUNG | DATA TRANSFER

1 *Visualizer 3D Studio* herunterladen oder USB-Stick an Notebook anstecken.
Download *Visualizer 3D Studio* or plug USB flash drive into notebook.

2 *Setup.exe* starten (Installation).
Start *Setup.exe* (Installation).

3 Folgen Sie den Installationsanweisungen auf dem Bildschirm.
Follow the installation instructions on the screen.

4 Fertig installiertes Programm *Visualizer 3D Studio* öffnen.
Open the installed software *Visualizer 3D Studio*.

5 Aktivierungscode eingeben (gültiger Software-Schlüssel erforderlich).
Get Activation Code (valid Software Key required) and enter it.

6 Bluetooth koppeln:  >  Einstellungen >  Geräte >  Bluetooth hinzufügen ...
Pair Bluetooth:  >  Settings >  Devices >  Add Bluetooth ...

7  ... *Bluetooth* auswählen und Gerät (OKM Fusion Professional Plus) koppeln.
... select *Bluetooth* and pair device (OKM Fusion Professional Plus).

8 *Visualizer 3D Studio* öffnen und Import starten:  
Open *Visualizer 3D Studio* and start Import:  

9 *Fusion Professional Plus (ab Version 2.0)* auswählen und Messparameter in Dialogfenster eingeben.
Select *Fusion Professional Plus (version 2.0 or higher)* and enter scan parameters in dialogs.

10 Messung mit Fusion Professional Plus durchführen. Nach Beendigung auf Notebook speichern .
Perform measurement with Fusion Professional Plus. After finishing, save file on notebook .

SOFTWARE INSTALLATION



**AKTIVIERUNGSCODE HIER:
GET ACTIVATION CODE:**

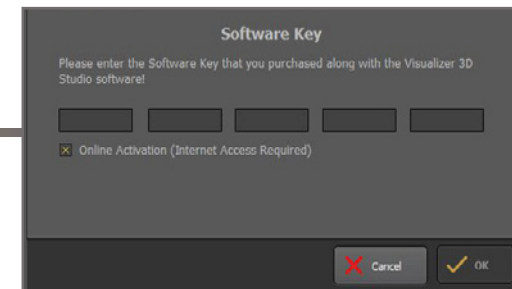


www.okmdetectors.com/software-activation

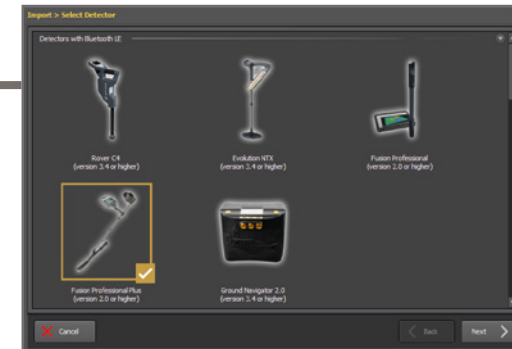


+49 3447 499 300 0

SOFTWARE ACTIVATION



DATA TRANSFER



WEITERE INFOS & SUPPORT

FURTHER INFORMATION & SUPPORT



HANDBUCH | USER MANUAL

WWW.OKMDETECTORS.COM/DOWNLOADS



3D GROUND SCAN GUIDE

WWW.OKMDETECTORS.COM/GROUND-SCAN-GUIDE



VIDEOS & TUTORIALS

WWW.OKMDETECTORS.COM/TUTORIALS



SUPPORT

Bei weiteren Fragen wenden Sie sich bitte an Ihren Händler oder direkt an OKM GmbH.

For further questions please contact your dealer or directly OKM GmbH in Germany.

OKM GmbH | Julius-Zinkeisen-Str. 7 | 04600 Altenburg | Germany
+49 3447 499 300 0 | info@okmdetectors.com

WWW.OKMDETECTORS.COM